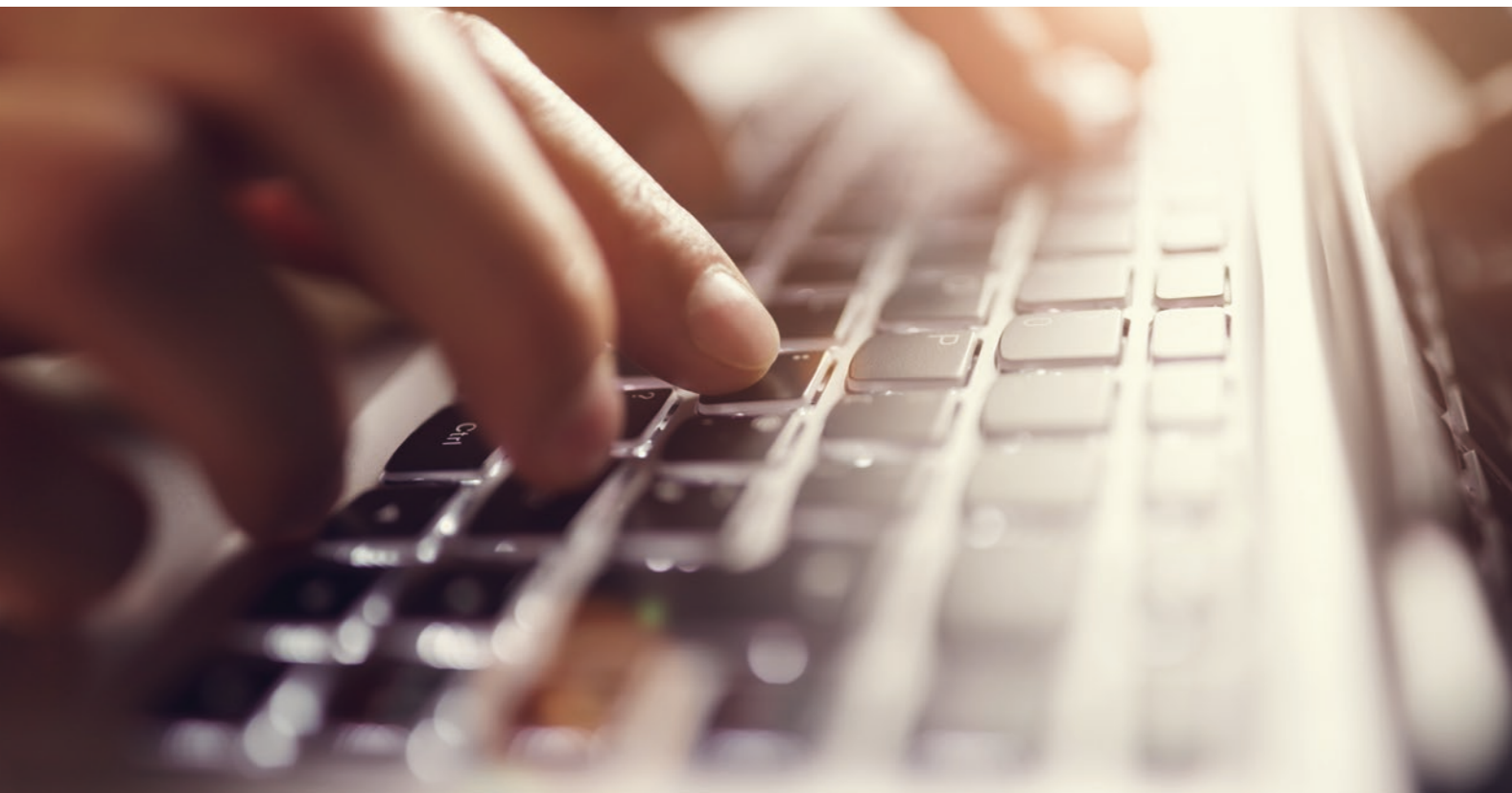




## Meliora Testlab case study: Cray Inc.

Cray was looking for a test management software package that would unify both automated and manual test results and record them properly. Creating test sets containing both manual and automated tests involves a lot of work and is therefore time consuming.

The test management tool Cray was after would have to support agile testing methodology, efficiently manage unique customer requirements, support manual and automated tests and organize and keep all testing efforts in one place.



Cray was evaluating both open source and commercial solutions. Open source test management tools offer flexibility but would require a lot of effort to customize these tools, and without support would have been an expensive and challenging solution.

The experts at Meliora were able to provide guidance and resolutions for questions related to Testlab's features and any technical concerns that were brought up. Meliora also provided excellent support and help with best practices concerning how to use Testlab. "Overall, Meliora's customer support was impressive" -Tim Harsch

Testlab is browser-based, which makes it easy and flexible to use. Reporting features are also flexible because Testlab provides reports in PDF, CSV and Excel formats. Another feature that was important for us was the ease of integration with Jenkins CI.



**"We feel that the testing process as a whole is now better organized and our testing team is more productive."** -Tim Harsch

*If you want to know more about Cray's success with Meliora Testlab or you are interested on how Testlab might help you and your organization to perform better, please contact Jyri at Meliora (Jyri Hytönen, Director of Sales, +358-50-4670398, jyri.hytonen@melioratestlab.com).*



For over 40 years Cray has been developing highly advanced computing solutions for the world's most complex science, engineering and analytics challenges. Ever since they introduced the world's first supercomputer in 1976, their technology has helped solve today's problems and made tomorrow's questions possible.

The challenge was to unify manual and automated tests. It was also important that testing would be integrated with other key processes like requirements management and reporting. This would drive Cray's testing team collaboration once all the testing results were recorded efficiently in one place.

"We feel that the testing process as a whole is now better organized and our testing team is more productive. We have also noticed that the coverage of testing has improved and the whole testing team is more aware and up to date about the status of the testing. From a business point of view the quality of our products is better." -Tim Harsch



Meliora Ltd  
Yliopistonkatu 6 LH 2  
40100 Jyväskylä  
FINLAND  
Tel. +358-50-4670398  
sales@melioratestlab.com  
www.melioratestlab.com